

AVG Float Drain

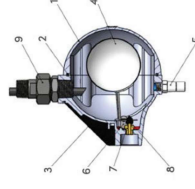
Technical Specifications

Type	Ball float type
Ambient and fluid temperature	1.5-65 °C
Operating pressure range	0-10 bar
Port size	Rc 1/2"
Drain port size	Rc 1/2"
Initial discharge value	72-75ml
Largest discharge capacity	400L/h (6.67L/min)
Bowl material	Aluminium
Valve seal material	Nitrile rubber
Serviceable	Yes
Valve orifice	3mm
Weight	0.6kg



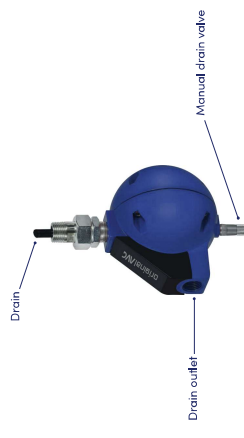
AVG Float Drain

Technical Drawing & Box Contents



Dimensions 134 x 108 x 180mm

1. Drain body
2. Plum-shaped O-ring
3. Nameplate Plastic Cap
4. Stainless Steel Float Ball
5. Manual Drain Valve
6. Fixed Kit
7. Drain Nozzle
8. Collard
9. Nipple



Box Contents	Qty
AVG Float Drain	1
Filling – Brass Hoseball – 1/2" BSP x 1/2" Hoseball	1
RPVC – Clear braided 12mm ID	1
Jubilee Clip – 13-20mm	1
Anti-air lock vent tube	1